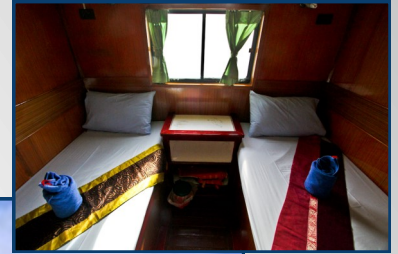


# Liveaboard on MV Manta Queen 5



**Manta Queen 5** is running a 3 days / 3 night's safari trips to Similan Islands, Koh Bon and Boonsung Wreck.

She accommodate 22 guests in comfortable air-conditioned Twin Bed Cabins. The Liveaboard Vessel is 26 meters long and 5 meters wide wooden hull built liveaboard with 5 dive staff and 8 boat crew. There is plenty of space to enjoy the time in between dives in the open dining area.

All meals on board are served buffet style freshly cooked from the on board kitchen. Snacks and fruits are served in between dives.

The dinghy gives you the opportunity to spend some time on the beautiful beaches.

## prices:

3 Days / 3 Nights

Diver

Non-diver

Twin bed cabin:

16.300 THB

15.300 THB

Price includes transfer hotel Khao Lak - boat - hotel, full board, Tanks, weights, weight belt and diving with experienced Dive master / Instructors

## 11 Dives

Price not includes: National Park & Diving fees: 1.200 THB / 500 THB per diver / snorkeler alcoholic & soft drinks, towels, torch for night dive, NITROX, diving equipment (full set: up to 500 THB per day).

## Schedule: Similans - Koh Bon - Boonsung Wreck

Trip #	Destination	Departure	Arrival	Days	Nights	Avail.	Twin Bed
MQ5 #196	3/3 SIM-BON-WRECK	25.10.18	28.10.18	3	3	Y	16,300
MQ5 #197	3/3 SIM-BON-WRECK	29.10.18	01.11.18	3	3	Y	16,300
MQ5 #198	3/3 SIM-BON-WRECK	02.11.18	05.11.18	3	3	Y	16,300
MQ5 #199	3/3 SIM-BON-WRECK	06.11.18	09.11.18	3	3	Y	16,300
MQ5 #200	3/3 SIM-BON-WRECK	10.11.18	13.11.18	3	3	Y	16,300
MQ5 #201	3/3 SIM-BON-WRECK	14.11.18	17.11.18	3	3	Y	16,300
MQ5 #202	3/3 SIM-BON-WRECK	18.11.18	21.11.18	3	3	Y	16,300
MQ5 #203	3/3 SIM-BON-WRECK	22.11.18	25.11.18	3	3	Y	16,300
MQ5 #204	3/3 SIM-BON-WRECK	26.11.18	29.11.18	3	3	Y	16,300
MQ5 #205	3/3 SIM-BON-WRECK	30.11.18	03.12.18	3	3	Y	16,300
MQ5 #206	3/3 SIM-BON-WRECK	04.12.18	07.12.18	3	3	Y	16,300
MQ5 #207	3/3 SIM-BON-WRECK	08.12.18	11.12.18	3	3	Y	16,300
MQ5 #208	3/3 SIM-BON-WRECK	12.12.18	15.12.18	3	3	Y	16,300
MQ5 #209	3/3 SIM-BON-WRECK	16.12.18	19.12.18	3	3	Y	16,300
MQ5 #210	3/3 SIM-BON-WRECK	20.12.18	23.12.18	3	3	Y	16,300
MQ5 #211	3/3 SIM-BON-WRECK	24.12.18	27.12.18	3	3	N	16,300
MQ5 #212	3/3 SIM-BON-WRECK	28.12.18	31.12.18	3	3	N	16,300
MQ5 #213	3/3 SIM-BON-WRECK	01.01.19	04.01.19	3	3	N	16,300
MQ5 #214	3/3 SIM-BON-WRECK	05.01.19	08.01.19	3	3	Y	16,300
MQ5 #215	3/3 SIM-BON-WRECK	09.01.19	12.01.19	3	3	Y	16,300
MQ5 #216	3/3 SIM-BON-WRECK	13.01.19	16.01.19	3	3	Y	16,300
MQ5 #217	3/3 SIM-BON-WRECK	17.01.19	20.01.19	3	3	Y	16,300
MQ5 #218	3/3 SIM-BON-WRECK	21.01.19	24.01.19	3	3	Y	16,300
MQ5 #219	3/3 SIM-BON-WRECK	25.01.19	28.01.19	3	3	Y	16,300
MQ5 #220	3/3 SIM-BON-WRECK	29.01.19	01.02.19	3	3	Y	16,300
MQ5 #221	3/3 SIM-BON-WRECK	02.02.19	05.02.19	3	3	N	16,300
MQ5 #222	3/3 SIM-BON-WRECK	06.02.19	09.02.19	3	3	N	16,300
MQ5 #223	3/3 SIM-BON-WRECK	10.02.19	13.02.19	3	3	Y	16,300
MQ5 #224	3/3 SIM-BON-WRECK	14.02.19	17.02.19	3	3	Y	16,300
MQ5 #225	3/3 SIM-BON-WRECK	18.02.19	21.02.19	3	3	Y	16,300
MQ5 #226	3/3 SIM-BON-WRECK	22.02.19	25.02.19	3	3	Y	16,300
MQ5 #227	3/3 SIM-BON-WRECK	26.02.19	01.03.19	3	3	Y	16,300
MQ5 #228	3/3 SIM-BON-WRECK	02.03.19	05.03.19	3	3	Y	16,300
MQ5 #229	3/3 SIM-BON-WRECK	06.03.19	09.03.19	3	3	Y	16,300
MQ5 #230	3/3 SIM-BON-WRECK	10.03.19	13.03.19	3	3	Y	16,300
MQ5 #231	3/3 SIM-BON-WRECK	14.03.19	17.03.19	3	3	Y	16,300
MQ5 #232	3/3 SIM-BON-WRECK	18.03.19	21.03.19	3	3	Y	16,300
MQ5 #233	3/3 SIM-BON-WRECK	22.03.19	25.03.19	3	3	Y	16,300
MQ5 #234	3/3 SIM-BON-WRECK	26.03.19	29.03.19	3	3	Y	16,300
MQ5 #235	3/3 SIM-BON-WRECK	30.03.19	02.04.19	3	3	Y	16,300
MQ5 #236	3/3 SIM-BON-WRECK	03.04.19	06.04.19	3	3	Y	16,300
MQ5 #237	3/3 SIM-BON-WRECK	07.04.19	10.04.19	3	3	Y	16,300
MQ5 #238	3/3 SIM-BON-WRECK	11.04.19	14.04.19	3	3	Y	16,300
MQ5 #239	3/3 SIM-BON-WRECK	15.04.19	18.04.19	3	3	Y	16,300
MQ5 #240	3/3 SIM-BON-WRECK	19.04.19	22.04.19	3	3	Y	16,300
MQ5 #241	3/3 SIM-BON-WRECK	23.04.19	26.04.19	3	3	Y	16,300
MQ5 #242	3/3 SIM-BON-WRECK	27.04.19	30.04.19	3	3	Y	16,300
MQ5 #243	3/3 SIM-BON-WRECK	01.05.19	04.05.19	3	3	Y	16,300
MQ5 #244	3/3 SIM-BON-WRECK	05.05.19	08.05.19	3	3	Y	16,300
MQ5 #245	3/3 SIM-BON-WRECK	09.05.19	12.05.19	3	3	Y	16,300

For more information watch our [liveboard page](#) or send an inquiry to [info@iq-dive.com](mailto:info@iq-dive.com)